

# Configuring Dialog Settings

In the dialog you can setup the corresponding parameters:

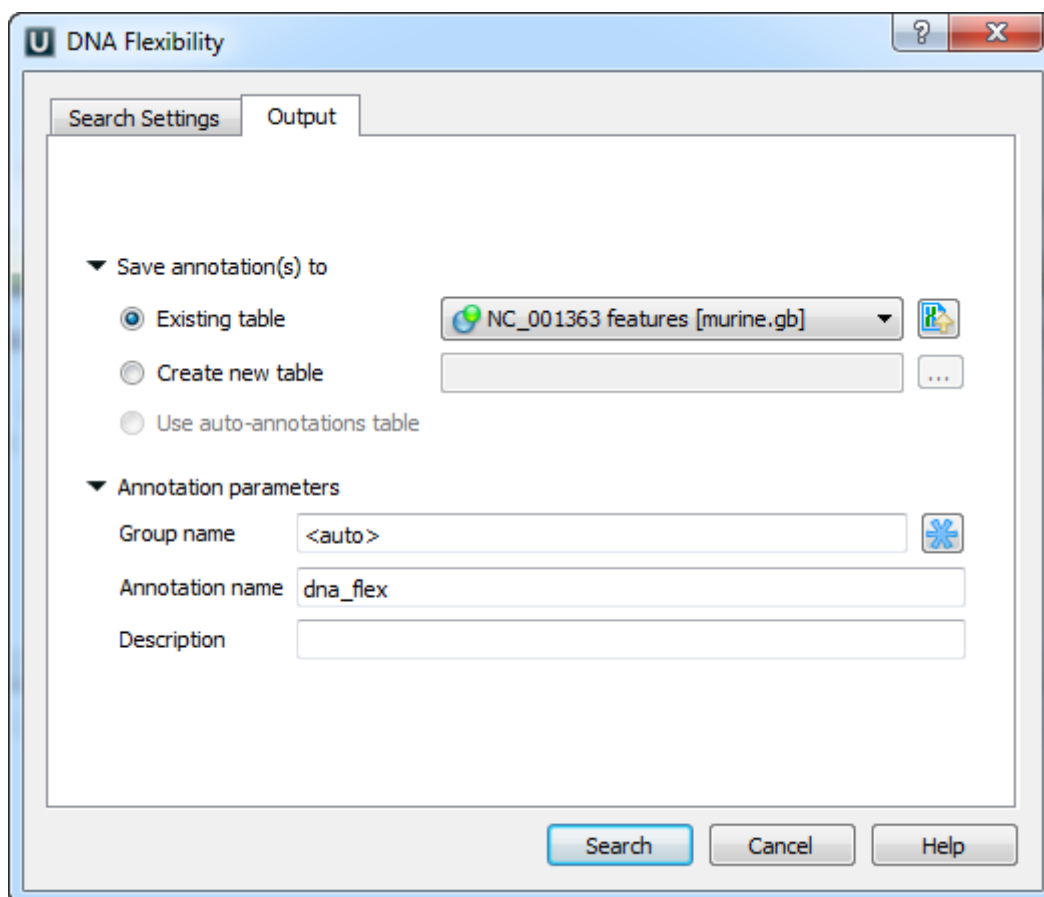
*Window size* — the number of bases in a window. The window size should be greater than 2. The default value is 100 bp.

*Window step* — the number of bases used to shift a window. The *Window step* should be a positive integer. The default value is 1 bp.

*Threshold* — the threshold value of the twist angle (see above). The default value is 13.7.

You can remember the input values or restore the default values using the *Remember Setting* and the *Restore Defaults* buttons.

The annotations names and other parameters can be changed on the *Output* tab of the dialog:



Once the *Search* button has been pressed, the *annotations* for the regions of the high DNA flexibility are created.