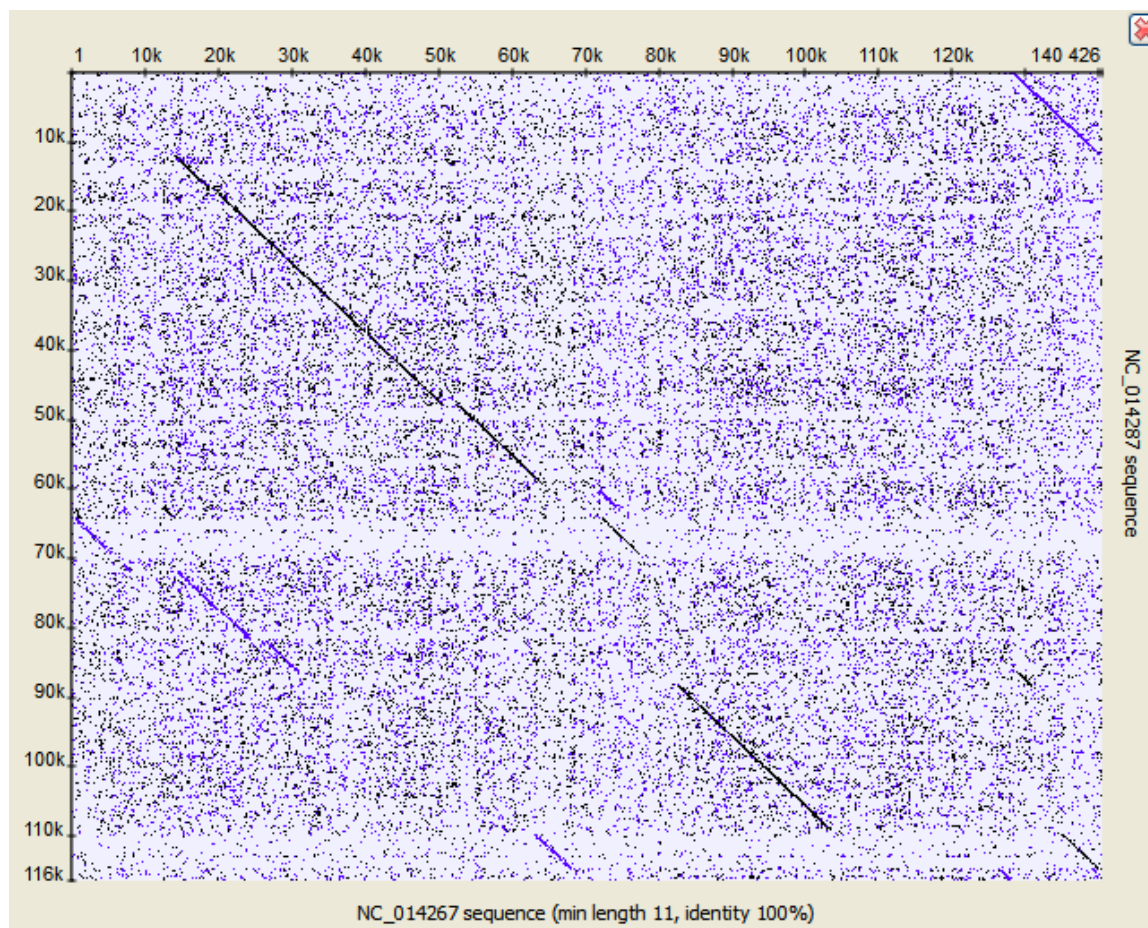


Dotplot

The *Dotplot* plugin provides a tool to build dotplots for DNA or RNA sequences. This allows comparing these sequences graphically. Using a dotplot, you can easily identify such differences between sequences as mutations, inversions, insertions, deletions and low-complexity regions.

Also the plugin provides advanced features: comparing multiple dotplots, navigation in a dotplot, dotplots synchronization, saving and loading a dotplot, etc.

An example of a dotplot view:



The *Dotplot* plugin uses the *Repeat Finder* plugin to build a dotplot, make sure you have the *Repeat Finder* plugin installed.

The *Dotplot* features are described in more details below.

- Creating Dotplot
- Navigating in Dotplot
- Zooming to Selected Region
- Selecting Repeat
- Interpreting Dotplot: Identifying Matches, Mutations, Inversions, etc.
- Editing Parameters
- Filtering Results
- Saving Dotplot as Image
- Saving and Loading Dotplot
- Building Dotplot for Currently Opened Sequence
- Comparing Several Dotplots