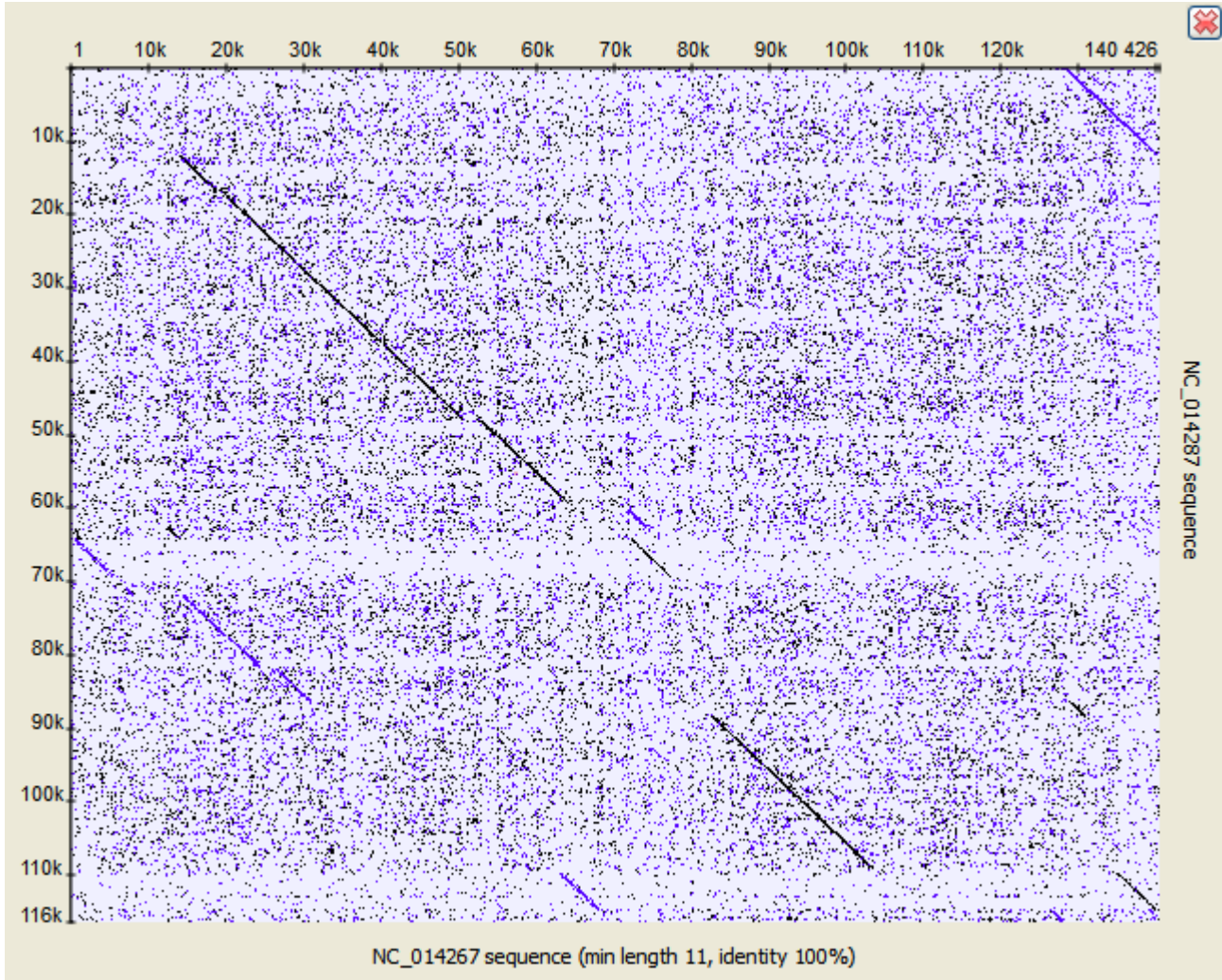


# Dotplot

The *Dotplot* plugin provides a tool to build dotplots for DNA or RNA sequences. This allows comparing these sequences graphically. Using a dotplot, you can easily identify such differences between sequences as mutations, inversions, insertions, deletions and low-complexity regions.

Also the plugin provides advanced features: comparing multiple dotplots, navigation in a dotplot, dotplots synchronization, saving and loading a dotplot, etc.

An example of a dotplot view:



The *Dotplot* plugin uses the [Repeat Finder](#) plugin to build a dotplot, make sure you have the *Repeat Finder* plugin installed.

The *Dotplot* features are described in more details below.

- [Creating Dotplot](#)
- [Navigating in Dotplot](#)
- [Zooming to Selected Region](#)
- [Selecting Repeat](#)
- [Interpreting Dotplot: Identifying Matches, Mutations, Inversions, etc.](#)
- [Editing Parameters](#)
- [Filtering Results](#)
- [Saving Dotplot as Image](#)
- [Saving and Loading Dotplot](#)
- [Building Dotplot for Currently Opened Sequence](#)
- [Comparing Several Dotplots](#)