

3D Structure Viewer Active view: 1: 1V6C Display Links Add

1V6C chain 1 sequence [amino]

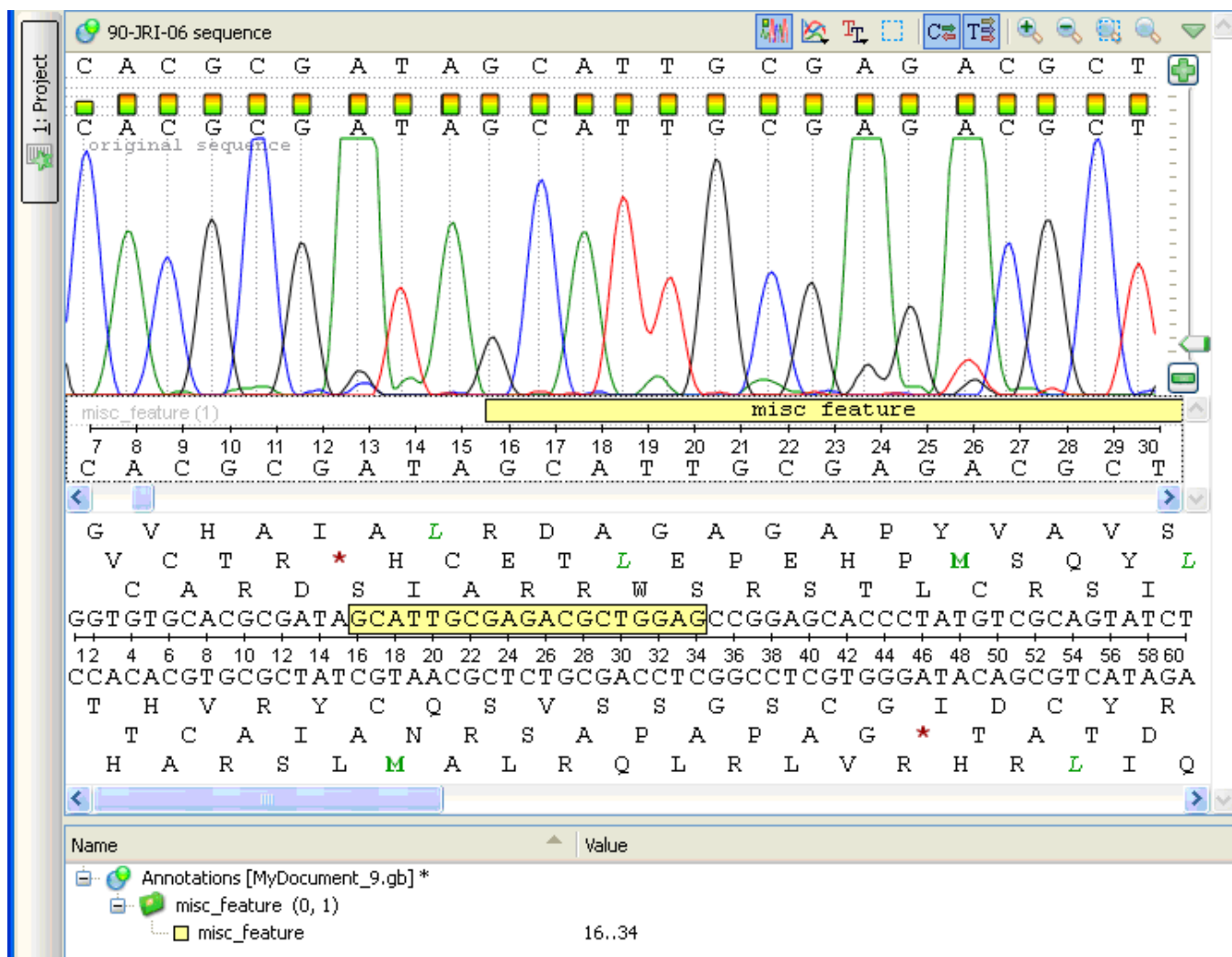
sec_struct (7)

sec_str beta_str beta alpha helix beta alpha helix beta_str

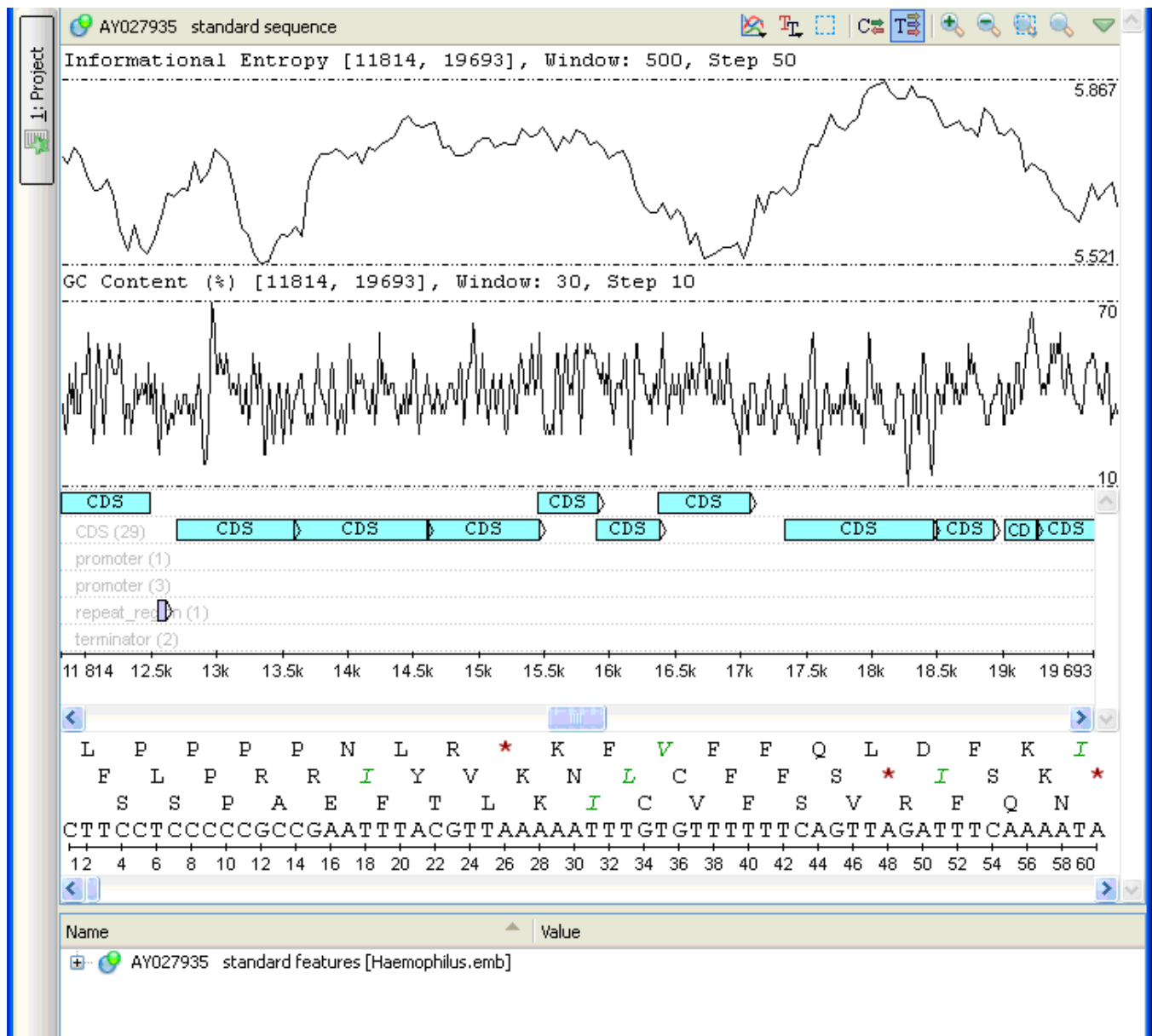
36 90 95 100 105 110 115 120 125 130 135 140 145 150 155 160 165

M P N Q N A N I H I V K V F N E A G W G Y S S L V A A I D T C V N S G G A N V V T M S L G G S G S T T T E R N A L N T H Y N N G V L L I A A A G N A G D S S Y

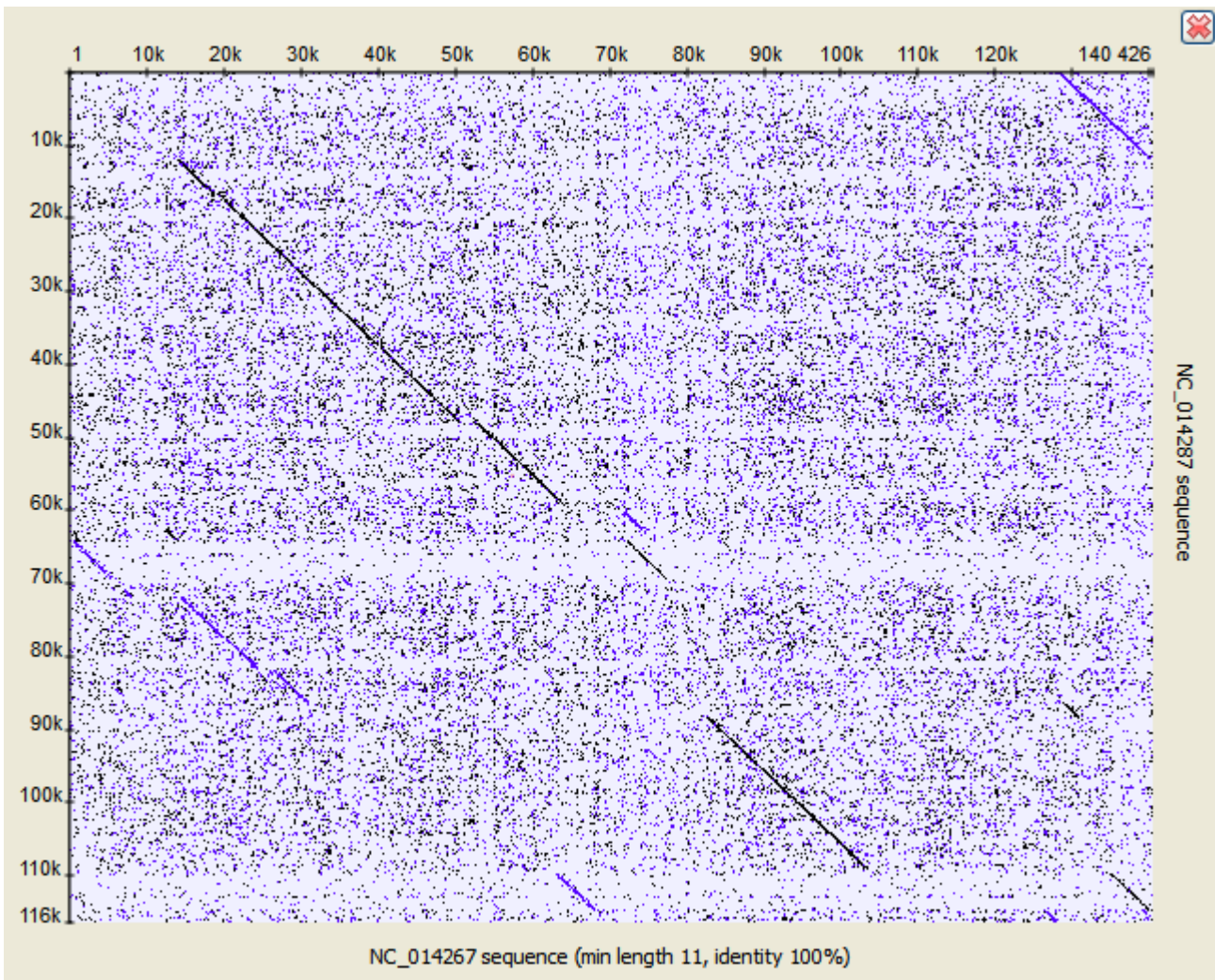
The [Chromatogram Viewer](#) adds support for chromatograms visualization and editing:



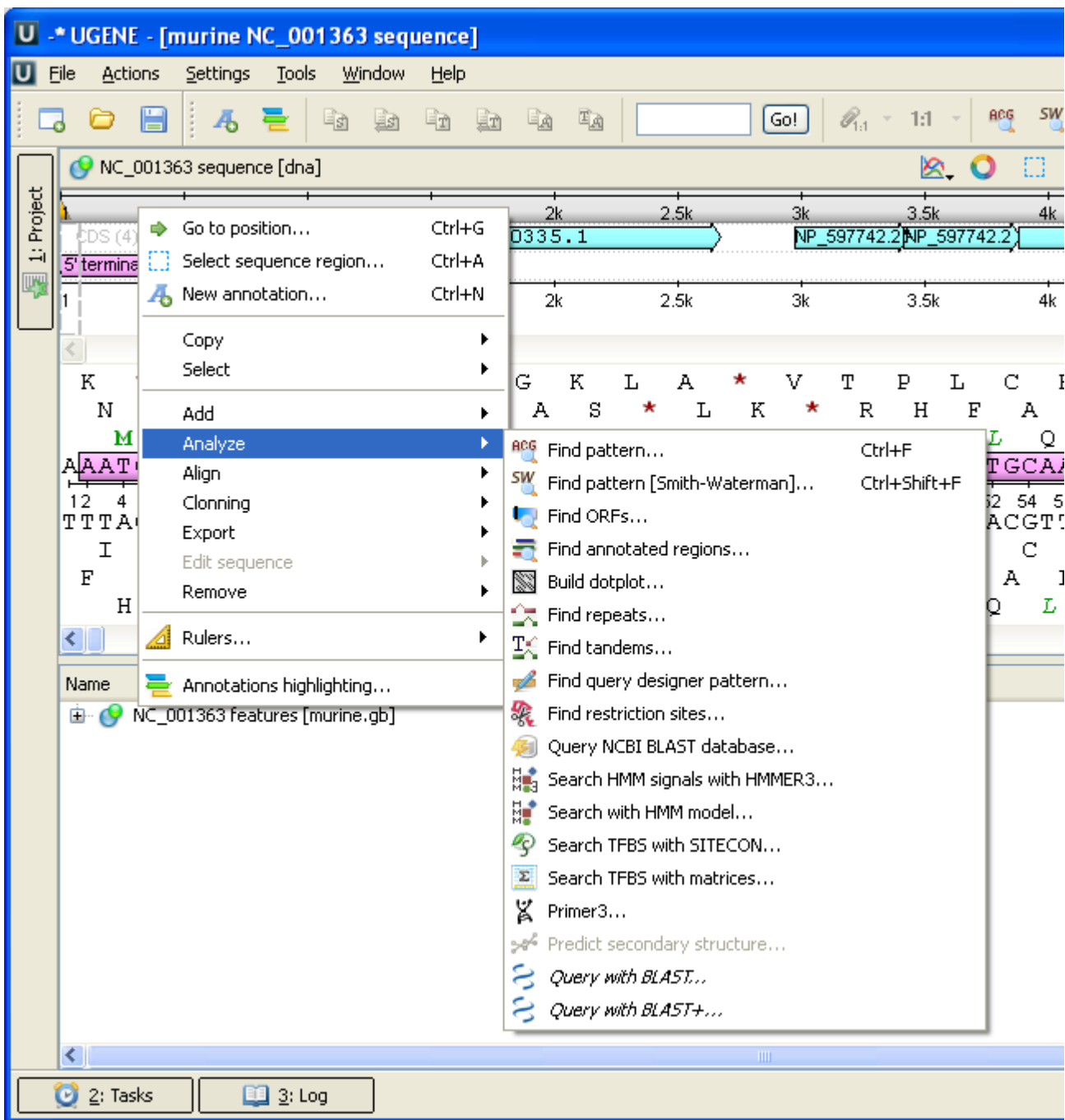
The *DNA Graphs Package* shows various graphs for sequences:



The *Dotplot* provides a tool to build dotplots for DNA or RNA sequences.



A number of other instruments add the graphical interface for popular sequence analysis methods:



For details see the next sections of the documentation:

- [Circular Viewer](#)
 - [Circular View Settings](#)
- [3D Structure Viewer](#)
 - [Opening 3D Structure Viewer](#)
 - [Changing 3D Structure Appearance](#)
 - [Selecting Render Style](#)
 - [Selecting Coloring Scheme](#)
 - [Calculating Molecular Surface](#)
 - [Selecting Background Color](#)
 - [Selecting Detail Level](#)
 - [Enabling Anaglyph View](#)
 - [Moving, Zooming and Spinning 3D Structure](#)
 - [Highlight Region on 3D Structure](#)
 - [Selecting Models to Display](#)
 - [Structural Alignment](#)
 - [Exporting 3D Structure Image](#)

- Working with Several 3D Structures Views
- Chromatogram Viewer
 - Exporting Chromatogram Data
 - Viewing Two Chromatograms Simultaneously
- Graphs Package
 - Description of Graphs
 - Graph Settings
 - Saving Graph Cutoffs as Annotations
- Dotplot
 - Creating Dotplot
 - Navigating in Dotplot
 - Zooming to Selected Region
 - Selecting Repeat
 - Interpreting Dotplot: Identifying Matches, Mutations, Inversions, etc.
 - Editing Parameters
 - Filtering Results
 - Saving Dotplot as Image
 - Saving and Loading Dotplot
 - Building Dotplot for Currently Opened Sequence
 - Comparing Several Dotplots